



TRAXX ELECTRIC ENGINE W/PROTO-SOUND® 3.0

20-5653-1

20-5654-1

20-5655-1

20-5656-1

20-5661-1

20-5669-2

20-5632-1

20-5632-2

20-5633-1

20-5633-2

20-5634-1

20-5634-2

20-5635-1

20-5648-1

20-5648-2

PARTS LIST & EXPLODED VIEW

REV. 07.2015

PARTS LIST: TRAXX ELECTRIC ENGINE BODY PARTS

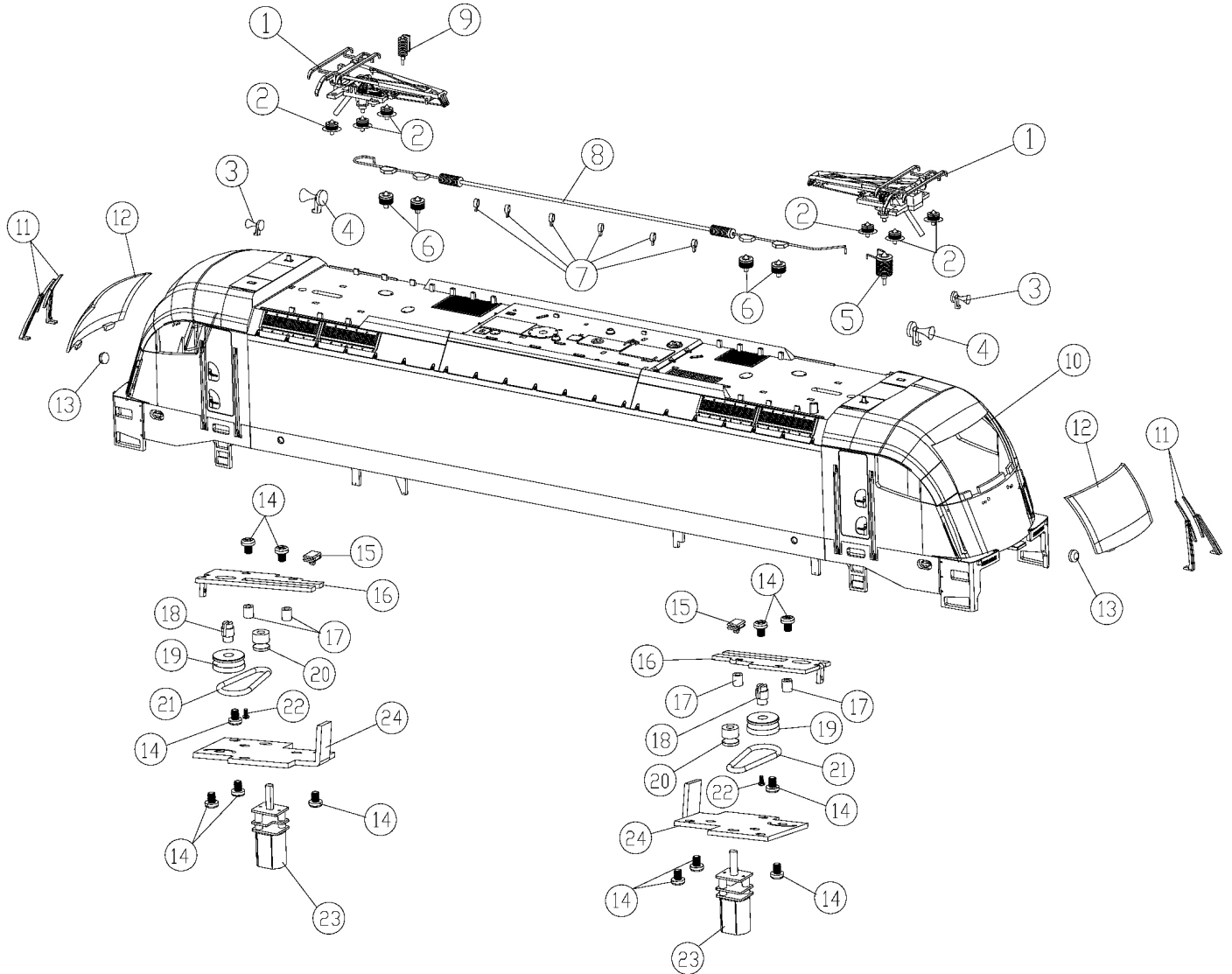


1.) PANTOGRAPH	BI-3103001001
2.) INSULATOR(A)	BD-3103002001
3.) HORN(A)	BF-3103003001
4.) HORN(B)	BF-3103004001
5.) INSULATOR(B)	BD-3103005001
6.) PIPE INSULATOR(A)	BD-3103006001
7.) LIFTING RING	FC-3103007001
8.) PANTO PIPE	FI-3103008001
9.) INSULATOR(C)	BD-3103009001
10.) BODY(CARGO# 482017-1)	FC-3103010001
BODY(CARGO# 482016-3)	FC-3103010002
BODY(CARGO# 482030-4)	FC-3103010003
BODY(CONNECTING EUROPE# 485020-2)	FC-3103010004
BODY(CONNECTING EUROPE# 485019-4)	FC-3103010005
BODY(CONNECTING EUROPE# 485018-6)	FC-3103010006
BODY(CONNECTING EUROPE# 485003-8)	FC-3103010007
BODY(MRCE DISPOLOK# 185552-7)	FC-3103010008
BODY(MRCE DISPOLOK# 185556-8)	FC-3103010009
BODY(MRCE DISPOLOK# 185555-0)	FC-3103010010
BODY(RAILION# 185084-1)	FC-3103010011
BODY(RAILION# 185185-6)	FC-3103010012
BODY(RAILION# 185200-3)	FC-3103010013
BODY(SBB CARGO RE# 482049-4)	FC-3103010014
BODY(SBB CARGO RE# 482035-5)	FC-3103010015
BODY(SBB CARGO RE# 482043-7)	FC-3103010016
BODY(VEOLIA TRANSPORT GERMANY# 146552-8)	FC-3103010017
BODY(RAILION EUROPEAN# 185085-8)	FC-3103010018
BODY(RAILION EUROPEAN# 185091-6)	FC-3103010019
BODY(RAILION EUROPEAN# 185090-8)	FC-3103010020
BODY(CROSS RAIL# 185580-8)	FC-3103010021
BODY(CROSS RAIL# 185578-2)	FC-3103010022
BODY(CROSS RAIL# 185579-0)	FC-3103010023
11.) WIPER FA-3103011001	
12.) SIDE WINDOW GLASS	FA-3103012001
13.) LAMP GUIDE	FA-3103013001
14.) SCREW, M3.0 X 4.0MM, BLACK	IA-0000010
15.) PANTO PLATE	FI-3103014001
16.) SLIDE FIX PLATE #1	FI-3103015001
17.) HEX NUT	IC-0000004
18.) PANTO PIN	IG-3103016001
19.) PULLEY(A)	FC-3103017001
20.) PULLEY(B)	FC-3103018001
21.) BELT	FC-3103019001
22.) SCREW (M1.4X3.0MM)(BLACK)	IA-0000120
23.) MOTOR-S	BE-3103020001
24.) SLIDE FIX PLATE #2	FI-3103021001

EXPLODED VIEW: TRAXX ELECTRIC ENGINE BODY



TRAXX Electric Engine Body



PARTS LIST: TRAXX ELECTRIC ENGINE CHASSIS PARTS



1.) RUBBER BAND	BI-4500004	WHEEL AXLE SET B, HI-RAIL, OUTER	EG-3103055002
2.) TACH BOARD, PS3	AG-0000102	WHEEL AXLE SET B, HI-RAIL, CENTER	EG-3103055003
3.) MOTOR	BE-3103022001	WHEEL AXLE SET B, HI-RAIL, INNER	EG-3103055004
4.) MOTOR MOUNT	BI-3103023001	WHEEL AXLE SET B, SCALE, OUTER	EG-3103055005
5.) SCREW(M3.0X14.0MM,W/LOCK WASHER)	IA-0000012	WHEEL AXLE SET B, SCALE, CENTER	EG-3103055006
6.) PS3.0 PCB HEATSINK	IH-3103024001	50.) GEAR BOX COVER	EG-3103056001
7.) SCREW(M3.0X6.0MM,BLACK)	IA-0000016	51.) SCREW (M2.0X7.0MM)(BLACK)	IA-0000059
8.) HO PANTO PCB	BA-3103025001	52.) PICK UP PLATE	IH-3103057001
9.) PANTO PCB BRACKET	IH-3103026001	53.) HEX NUT	IC-0000004
10.) SCREW (M2.5X6.0MM) (BLACK)	IA-0000166	54.) PICK UP ROLLER ASSEMBLY	BD-3200001
11.) PS3 DIESEL/ELECTRIC BOARD	AE-1000034	55.) SCREW, M3 X 6.0MM, NI PLATED	IA-0000015
12.) PS3.0 PCB BRACKET	IH-3103027001		
13.) LAMP GUIDE-S	CI-3103028001		
14.) SEAT	FI-3103029001		
15.) LAMP BRACKET	IH-3103030001		
16.) PATCH BOARD	AD-3103031001		
17.) INSULATOR SPACE	BD-3103032001		
18.) SCREW (M3.0X7.0MM) (BLACK)			
19.) E/WIRE GUIDE	IH-3103033001		
20.) SWITCH, DPST LARGE	BB-3103034001		
21.) SWITCH, SPST SMALL	BB-3103035001		
22.) VOLUME POT	BI-0000040		
23.) FLOOR	DH-3103036001		
24.) SCREW(1/8"XL16.0XD6.4MM,BLACK)			
25.) BUMPER	DG-3103037001		
26.) BUMPER SPRING	IE-3103038001		
27.) PILOT,BLACK	DG-3103039001		
PILOT,DARK GRAY			
28.) SPEAKER BRACKET	IH-3103040001		
29.) HORN(FOR ALASKA,GM&O)	BF-3103041001		
30.) TRUCK HOLDER(A)	FC-3103042001		
31.) FUEL TANK,BLACK	FC-3103043001		
FUEL TANK,DARK GRAY			
32.) T-BAR	IG-0000001		
33.) PROTO-COUPLER, SHORT	DD-0000033		
34.) COUPLER PLATE	IH-3103044001		
35.) COIL COUPLER BASE	IH-3103045001		
36.) SPRING(5.5X14.0MM)	IE-0000007		
37.) WASHER(5.0X10.0X1.0MM)	ID-0000009		
38.) E-CLIP(3.5X8.0X0.5MM)	IF-0000002		
39.) INSULATOR	BD-0000009		
40.) P/U WIRE PLATE	BI-3103046001		
41.) GEER BOX SET	EG-3103047001		
42.) UNDERFROM PIPE(A)	DF-3103048001		
43.) UNDERFROM PIPE(C)	DF-3103049001		
44.) UNDERFROM PIPE(D)	DF-3103050001		
45.) UNDERFROM PIPE(B)	DF-3103051001		
46.) TRUCK SIDE FRAME-R	DB-3113052001		
47.) TRUCK SIDE FRAME-L	DB-3123053001		
48.) WHEEL AXLE SET A, SCALE, INNER	EG-3103054001		
WHEEL AXLE SET A, HI-RAIL, OUTER	EG-3103054002		
WHEEL AXLE SET A, HI-RAIL, CENTER	EG-3103054003		
WHEEL AXLE SET A, HI-RAIL, INNER	EG-3103054004		
WHEEL AXLE SET A, SCALE, OUTER	EG-3103054005		
WHEEL AXLE SET A, SCALE, CENTER	EG-3103054006		
49.) WHEEL AXLE SET B, SCALE, INNER	EG-3103055001		

EXPLODED VIEW: TRAXX ELECTRIC ENGINE CHASSIS



TRAXX Electric Engine

Chassis

